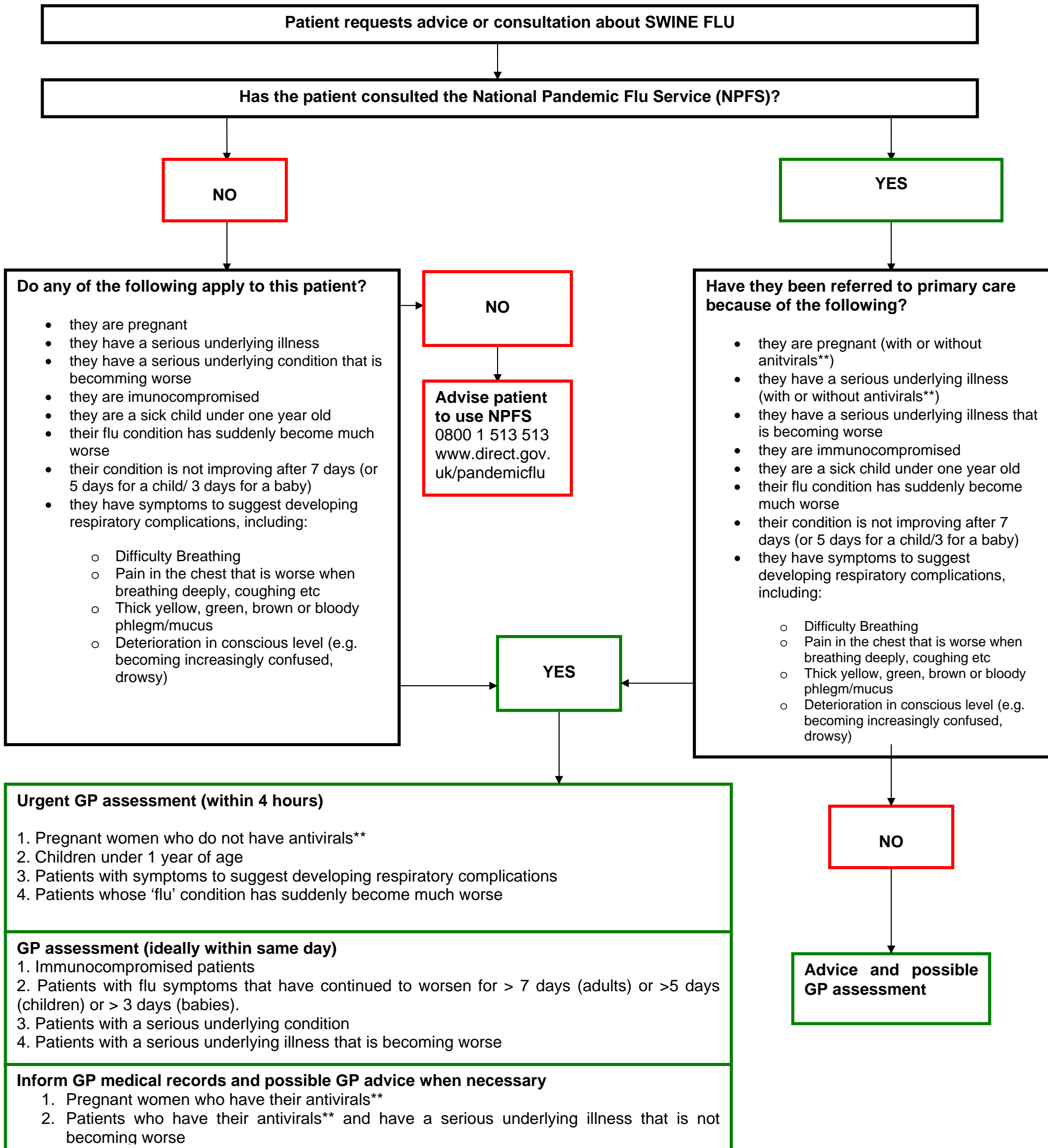


Flowchart for Triage: Swine Flu Patients*
For GP Practice Managers and Receptionists



*FOR GUIDANCE ONLY. This chart is to assist in the triage of swine flu patients and will not cover all circumstances. Please speak to GP if in doubt over patient status.

** Antivirals refer to Tamiflu and Relenza provided via the National Pandemic Flu Service